

1. 6.35mm Headphone Jack
Connect headphones.

2. Xbass®
Xbass® was uniquely-designed to extend the bass response to suit different headphones.

- For bass shy headphones.
- Direct.

3. 3D HolographicSound®
3D HolographicSound® recreates a holographic sound field like listening to a pair of speakers.

- 3D HolographicSound.
- Direct.

4. Volume Control ON/OFF

5. Gain Switches
Micro switches to adjust gain are located on the underside of the iCAN.

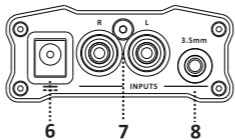
Gain	6dB	18dB
1	–	●
2	–	●



In order to activate the warranty for this iFi product, you must register with the iFi website.

Component :

Serial no:



6. DC Power input
Connect ONLY the iFi Ultra Low-Noise AC/DC adapterfor use and to re-charge the internal battery(with the iCAN powered off, once the battery is fully-charged, the LED will no longer be lit).

7. RCA Inputs.
From a music source with an RCA connection.

8. 3.5mm Inputs.
From a music source with a 3.5mm connection.

Tip: Only one input should be connected and used at a time.

LED
Blue: Charging.
Green: Normal.
Red: Low Battery.

Specifications

- Input Voltage: AC 100 - 240V, 50/60Hz
- Battery: Lithium-polymer 1400mAh
- Power Consumption: <2W idle, 4W max
- Dimensions: 106(l) x 67(w) x 28(h) mm
- Weight: 167g (0.37 lbs)
- Warranty period: 12 months

ifi-audio.com

Ver1.0

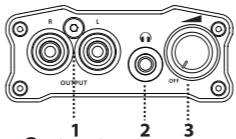
Terms & Conditions

iFi guarantees that this iFi product shall be free from defects in materials and workmanship for a period of 1 year for parts and labour.

The warranty period begins at the date of retail sale by an authorized iFi distributor/dealer and is subject to the following requirements and understandings:

- It is the responsibility of the buyer within 30 days from the original sale, to register and activate the product warranty with the iFi website.
- The original invoice must be produced for authentication prior to any warranty claim.
- The iFi product must not have been modified in any manner whatsoever, or the warranty will immediately become void.
- The iFi warranty is only valid in the country of original sale.
- The product must not have been stored in a humid environment; nor subjected to weather, water, or saltwater spray.
- iFi shall not, under any circumstances, be liable for any incidental or consequential damages arising from the loss of property or other damage or losses due to the failure of an iFi product. iFi is not liable for loss of use or inconvenience caused by the failure of an iFi product. iFi is not liable for damage caused to other audio components because of the failure of an iFi product.
- During the warranty period, iFi will repair the product to working order, or, at iFi's option, replace the defective module with a similar available product.
- All repairs performed after expiry of the warranty period will be charged to the owner and will carry a 180-day warranty on parts and labour. The customer is responsible for shipping the unit to the iFi distributor in the original packaging. This includes the payment of any shipping charges and related taxes.
- Should any warranty issues arise, the decision of iFi is full and final.

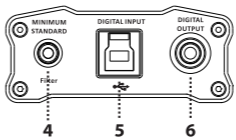
ifi-audio.com



1. RCA Line Output
To amplifier, receiver, HiFi system or similar.

2. 3.5mm Headphone jack
Connect headphones.

3. Volume Control ON/OFF



4. Digital Filter
Alternate between Standard or Minimum Phase.

Tip: we recommend Minimum Phase for listening; Standard for measurements.

5. USB 3.0 (2.0 compatible) Input
From computer* or smartphone.

*Also provide charging for the internal battery.

6. SPDIF Output
To SPDIF input of a DAC or similar. The SPDIF stangard does not support DSD/DXD/352/384kHz.

Tip: MAC OSX (10.6 or later) has built-in native support for the iDSD.

MS Windows (XP or later), please download and install the driver software before connecting the iDSD to the computer (www.ifi-audio.com).

Tip: For the best sound quality, always set the volume control on the computer and the playback software to 100%.



In order to activate the warranty for this iFi product, you must register with the iFi website.

Component :

Serial no:

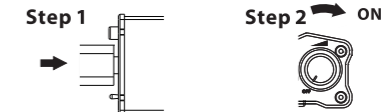
LED	
Power ON:	
LED Color	Mode
Green	44/48kHz
Yellow	88/96kHz
Cyan	176/192kHz
White	DXD352/384kHz
Blue	DSD2.8/3.1MHz
Magenta	DSD5.6/6.2MHz
Green(Flashing)	Awaiting USB Connection
Red	Battery Low
None	Battery Empty

Power OFF:	
LED Color	Mode
Blue*	Charging

When the iDSD is fully-charged, the Blue LED will no longer be lit.

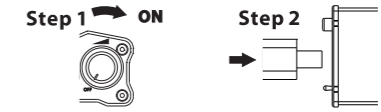
USB Power

Connect to the computer first, and then turn ON the power.



Battery Power

Connect to the computer first, and then turn ON the power.



Tip: Under battery power, the nano iDSD will continue to use battery power even if the USB cable is connected afterwards.

Tip: For Apple iPhone/ iPad/iPod Touch, Android devices, please use Battery Power, otherwise you may receive error messages from your device.

Tip: For connection to Apple devices, the Apple USB Camera Adapter is required. For connection to Android devices, an OTG cable and appropriate OS support are required. For more information, please refer to www.ifi-audio.com.

Specifications

- Formats supported:
 - PCM 44.1 to 384kHz/16-32bit
 - DSD 2.8, 3.1, 5.6 and 6.2MHz/1bit
 - DXD 352.8, 384kHz/24bit
- High-Speed Asynchronous USB 2.0 (32bit/384kHz)
- Battery: Lithium-polymer 1400mAh
- Power (max): 1.5W
- Dimensions: 106(l) x 67(w) x 28(h) mm
- Weight: 167g (0.37 lbs)
- Warranty period: 12 months

ifi-audio.com

Ver1.0

Terms & Conditions

iFi guarantees that this iFi product shall be free from defects in materials and workmanship for a period of 1 year for parts and labour.

The warranty period begins at the date of retail sale by an authorized iFi distributor/dealer and is subject to the following requirements and understandings:

- It is the responsibility of the buyer within 30 days from the original sale, to register and activate the product warranty with the iFi website.
- The original invoice must be produced for authentication prior to any warranty claim.
- The iFi product must not have been modified in any manner whatsoever, or the warranty will immediately become void.
- The iFi warranty is only valid in the country of original sale.
- The product must not have been stored in a humid environment; nor subjected to weather, water, or saltwater spray.
- iFi shall not, under any circumstances, be liable for any incidental or consequential damages arising from the loss of property or other damage or losses due to the failure of an iFi product. iFi is not liable for loss of use or inconvenience caused by the failure of an iFi product. iFi is not liable for damage caused to other audio components because of the failure of an iFi product.
- During the warranty period, iFi will repair the product to working order, or, at iFi's option, replace the defective module with a similar available product.
- All repairs performed after expiry of the warranty period will be charged to the owner and will carry a 180-day warranty on parts and labour. The customer is responsible for shipping the unit to the iFi distributor in the original packaging. This includes the payment of any shipping charges and related taxes.
- Should any warranty issues arise, the decision of iFi is full and final.

ifi-audio.com